

Why To ensure beverage quality and crew safety

Time required 5 minutes to prepare 10 minutes to complete

Time of day At close For 24-hour restaurants: during low-volume periods

Hazard icons  Chemicals  Electricity

Tools and Supplies



Procedure

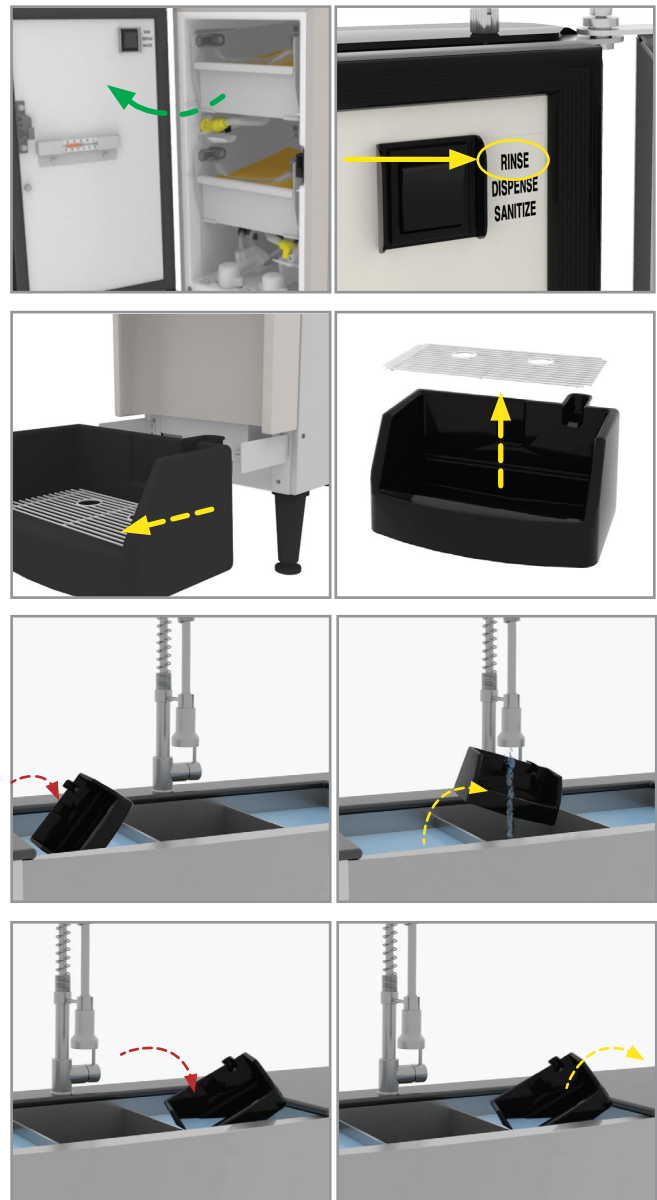
Cleaning and sanitizing

 Electricity

1. Open dispenser door.
2. Locate Rinse/Dispense/Sanitize switch and select RINSE.
3. Remove drip tray.
4. Remove drip tray grate from drip tray.

 Chemicals

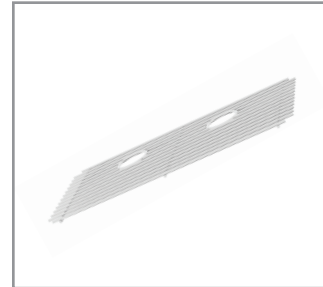
5. Wash drip tray with SolidSense APSC dispenser using the provided brush.
6. Rinse the drip tray with hot water.
7. Place in SolidSense Sanitizer solution for 1 minute.
8. Remove the drip tray from sanitizer solution, rinse sanitizer out completely, then invert and allow to air dry on counter.



Cleaning and sanitizing (continued)

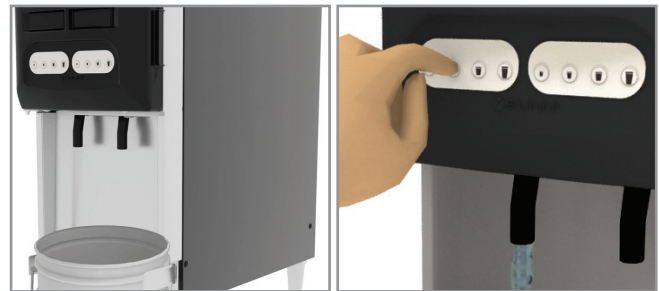
Procedure

9. Repeat washing and sanitizing steps (5 thru 8) with drip tray grate.



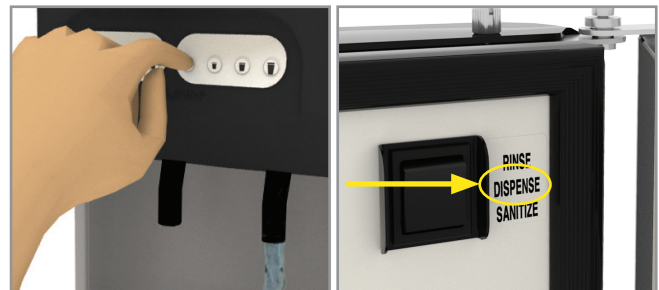
10. With drip tray removed, place 1 empty container underneath the dispense nozzles.

11. Press any button on the left dispense station to run a rinse cycle.



12. Repeat for the right dispense station.

13. Open dispenser door and select DISPENSE on switch.



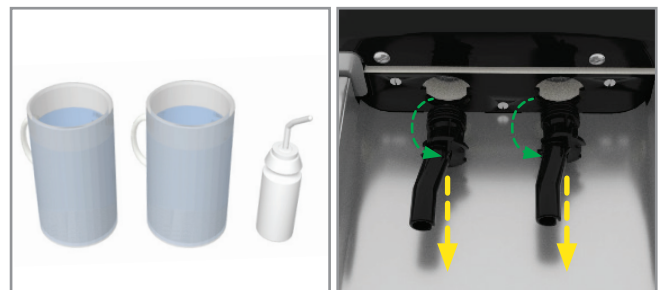
14. Close Door

15. Prepare 2.5 gallons of KAY-5 Sanitizer/Cleaner.

- Mix 1 packet of KAY-5 Sanitizer/Cleaner with 2.5 gallons of lukewarm water to achieve 100 ppm solution.



16. Fill 2 small containers and a squeeze bottle with KAY-5 solution and set aside.



17. Remove both nozzles from the dispenser.

NOTE: Twist a quarter turn while pulling down.

18. Place nozzles into one of the small containers of KAY-5 solution and set aside.



19. Dip cleaning brush into the small container of KAY-5 solution.

Cleaning and sanitizing (continued)

Procedure

20. Scrub the interior of the dispense valves.

21. Squeeze KAY-5 solution vigorously into the dispense valve to sanitize.

Repeat for both valves.

22. With the small brush, scrub the interior and exterior of the nozzles and o-rings in the container.

23. Remove nozzles from the cleaning container.

24. Place nozzles into the other small container to sanitize for 1 minute.

25. Wash hands.

26. Reinstall dispense nozzels.

NOTE: Push up and make a quarter turn to lock.

27. Wipe up spills inside the machine with cleaning solution and a clean, sanitizer-soaked towel.

28. Spray a clean, sanitizer-soaked towel with Peroxide Multi-Surface Cleaner & Disinfectant solution (3N1) and wipe down the exterior of the machine.

29. Replace clean drip tray.

